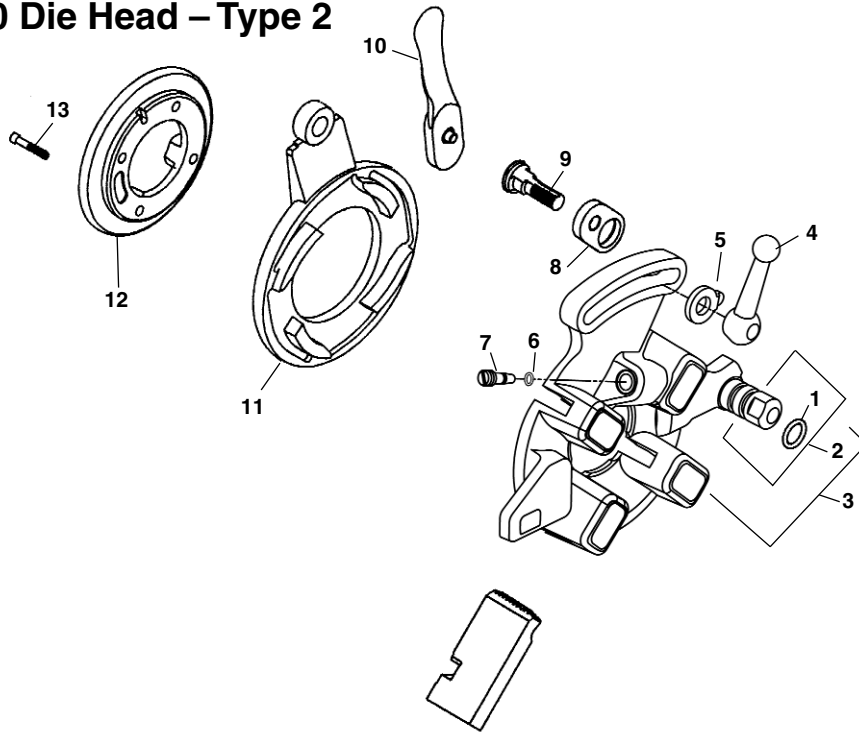


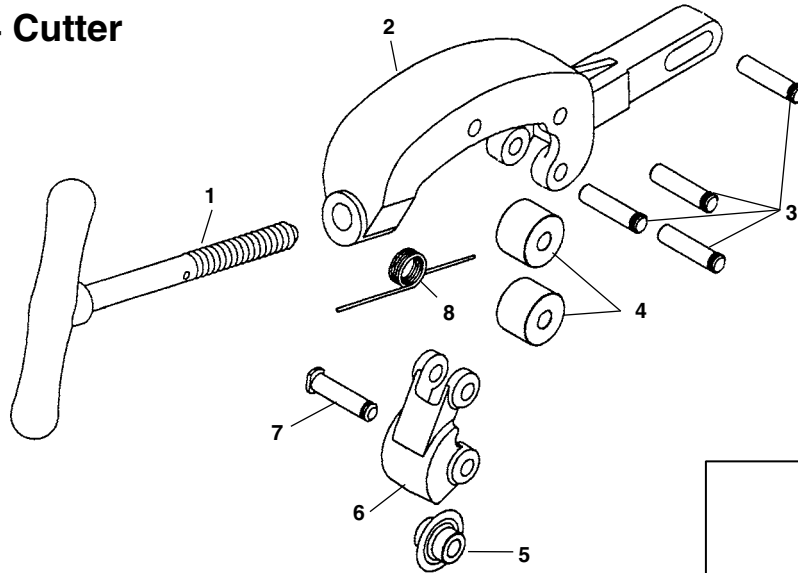
610 Die Head – Type 2



NOTE: Order parts by Catalog Number only. DO NOT order by Reference Number.

| Ref. No. | Catalog No. | Description |
|----------|-------------|--|
| — | 67817 | 610 Die Head |
| 1 | 69392 | O-Ring |
| 2 | 69292 | Post |
| 3 | 69302 | Die Head Body w/Post & O-Ring |
| 4 | 39970 | Clamp Lever |
| 5 | 26957 | Washer |
| 6 | 69182 | O-Ring |
| 7 | 69177 | Needle Pin |
| 8 | 39950 | Throwout Link |
| 9 | 39860 | Lock Screw |
| 10 | 46555 | Throwout Lever |
| 11 | 69442 | Cam Plate |
| 12 | 69352 | Retaining Ring |
| 13 | 32205 | Screw 1/4" - 20 x 5/8" Socket Head (4) |

354 Cutter



| Ref. No. | Catalog No. | Description |
|----------|-------------|---------------------|
| — | 68877 | 354 Cutter Assembly |
| 1 | 69007 | Feedscrew & Handle |
| 2 | 69017 | Cutter Frame |
| 3 | 46662 | Roller Pin (4) |
| 4 | 34775 | Roll (2) |
| 5 | 33105 | F3 Cutter Wheel |
| 6 | 69012 | Wheel Housing |
| 7 | 34780 | Pin & Clip |
| 8 | 58617 | Torsion Spring |

334 Reamer

| Ref. No. | Catalog No. | Description |
|----------|-------------|-------------------------------|
| — | 68872 | 334 Reamer Assembly |
| 1 | 68997 | Screw #8-32 x 7/16" Flat Head |
| 2 | 68977 | Reamer Blade |
| 3 | 68992 | Reamer Arm w/Cone |
| 4 | 39885 | Wave Washer |
| 5 | 68987 | Clevis Pin |
| 6 | 69002 | 3/32" x 3/4" Roll Pin |

